



www.cplh.com  
 A Civil Service  
 A & E Firm

1000 W. 10th Street  
 Suite 200  
 Key Colony Beach, FL 33428  
 Phone: 561-321-1111  
 Fax: 561-321-1112

CPH, Inc.  
 1000 W. 10th Street  
 Suite 200  
 Key Colony Beach, FL 33428  
 Phone: 561-321-1111  
 Fax: 561-321-1112

CPH, Inc.  
 1000 W. 10th Street  
 Suite 200  
 Key Colony Beach, FL 33428  
 Phone: 561-321-1111  
 Fax: 561-321-1112

CPH, Inc.  
 1000 W. 10th Street  
 Suite 200  
 Key Colony Beach, FL 33428  
 Phone: 561-321-1111  
 Fax: 561-321-1112

CPH, Inc.  
 1000 W. 10th Street  
 Suite 200  
 Key Colony Beach, FL 33428  
 Phone: 561-321-1111  
 Fax: 561-321-1112

CPH, Inc.  
 1000 W. 10th Street  
 Suite 200  
 Key Colony Beach, FL 33428  
 Phone: 561-321-1111  
 Fax: 561-321-1112

CPH, Inc.  
 1000 W. 10th Street  
 Suite 200  
 Key Colony Beach, FL 33428  
 Phone: 561-321-1111  
 Fax: 561-321-1112

CPH, Inc.  
 1000 W. 10th Street  
 Suite 200  
 Key Colony Beach, FL 33428  
 Phone: 561-321-1111  
 Fax: 561-321-1112

CPH, Inc.  
 1000 W. 10th Street  
 Suite 200  
 Key Colony Beach, FL 33428  
 Phone: 561-321-1111  
 Fax: 561-321-1112

CPH, Inc.  
 1000 W. 10th Street  
 Suite 200  
 Key Colony Beach, FL 33428  
 Phone: 561-321-1111  
 Fax: 561-321-1112

CPH, Inc.  
 1000 W. 10th Street  
 Suite 200  
 Key Colony Beach, FL 33428  
 Phone: 561-321-1111  
 Fax: 561-321-1112

CPH, Inc.  
 1000 W. 10th Street  
 Suite 200  
 Key Colony Beach, FL 33428  
 Phone: 561-321-1111  
 Fax: 561-321-1112

CPH, Inc.  
 1000 W. 10th Street  
 Suite 200  
 Key Colony Beach, FL 33428  
 Phone: 561-321-1111  
 Fax: 561-321-1112

CPH, Inc.  
 1000 W. 10th Street  
 Suite 200  
 Key Colony Beach, FL 33428  
 Phone: 561-321-1111  
 Fax: 561-321-1112

CPH, Inc.  
 1000 W. 10th Street  
 Suite 200  
 Key Colony Beach, FL 33428  
 Phone: 561-321-1111  
 Fax: 561-321-1112

KEY COLONY BEACH CITY HALL

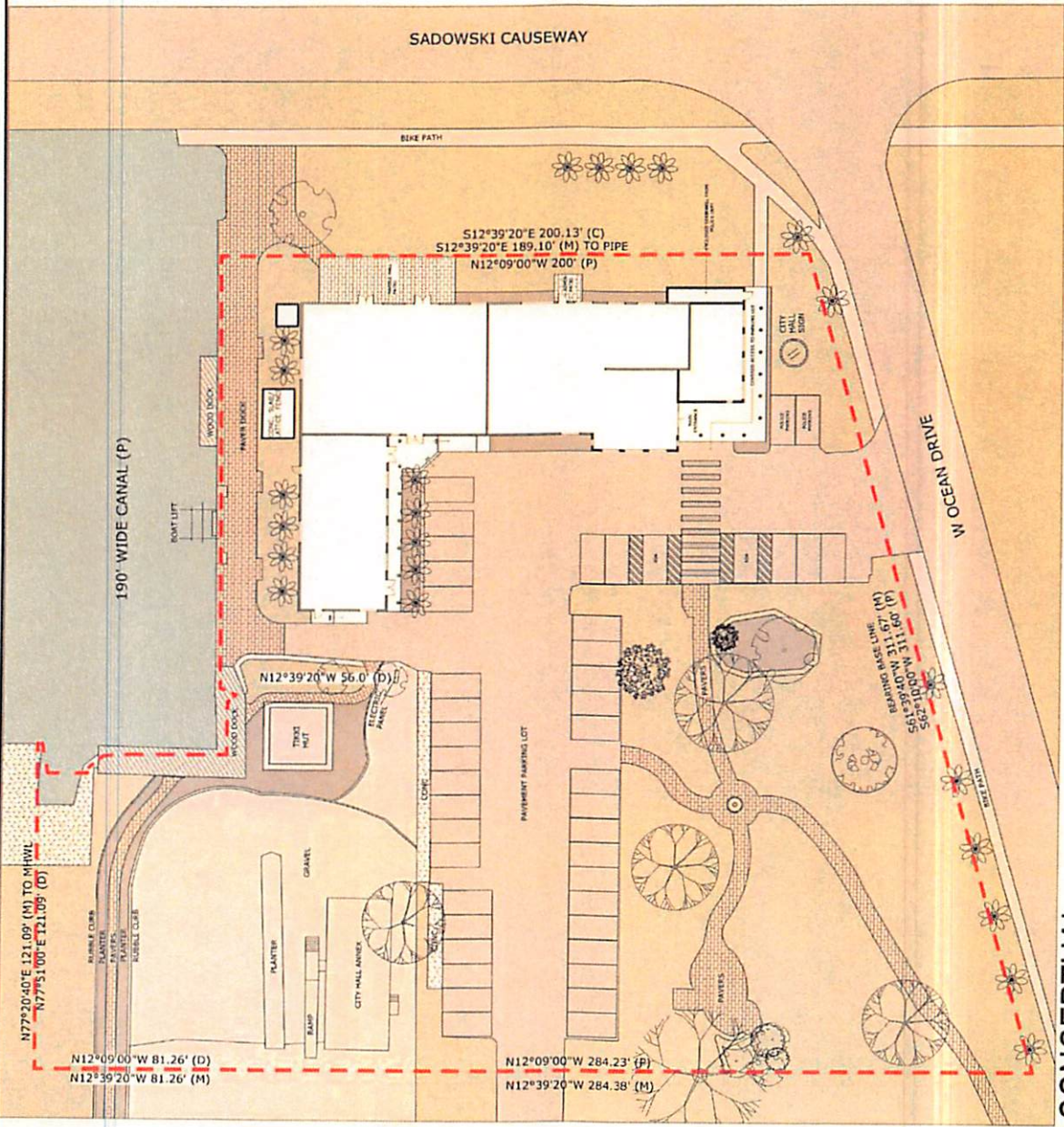
CONCEPTUAL SITE PLAN



1000 W. 10th Street  
 Suite 200  
 Key Colony Beach, FL 33428  
 Phone: 561-321-1111  
 Fax: 561-321-1112

Sheet No.  
**A001**

- Legend**
-  EXISTING WALLS
  -  NEW WALLS
  -  PROPERTY LINE



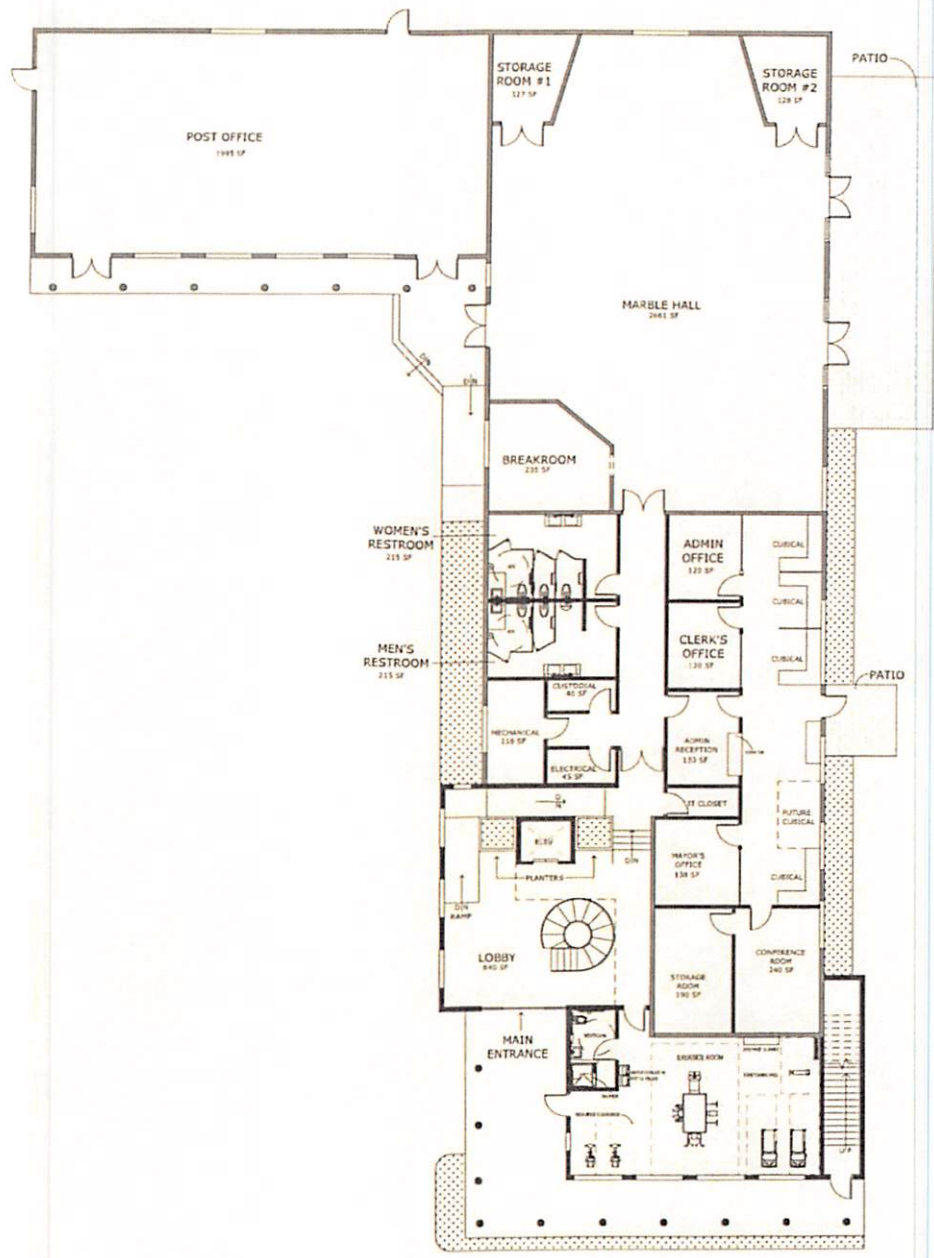
**CONCEPTUAL  
 SITE PLAN**

NORTH



1" = 1/40'

CONCEPTUAL  
GROUND FLOOR PLAN

1'-0"=1/16"



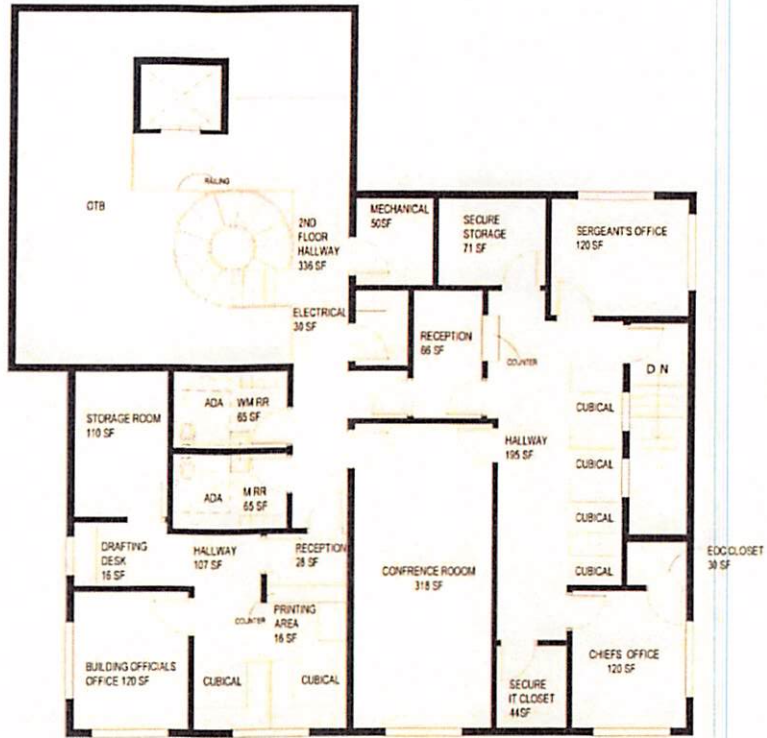
SADOWSKY CAUSEWAY SIDE

	CONCEPTUAL GROUND FLOOR PLAN KEY COLONY BEACH CITY HALL		Drawing No. 201 Date 10/15/11	Revision No. 1 Date 10/15/11	Design: J. P. ... Check: ... Job No. 201101 Date 10/15/11		GPH A Full Service A E Firm 1000 ... ... ...
	Sheet No. A002	...					

WEST OCEAN DRIVE SIDE



CONCEPTUAL  
SECOND FLOOR PLAN

1'-0"=1/16"



SADOWSKY CAUSEWAY SIDE

WEST OCEAN DRIVE SIDE

	<p>CONCEPTUAL SECOND FLOOR PLAN</p>		<p>Design: ED Drawn: CH Checked: ED Date: 04/11/2014 Scale: 1/16"</p>	<table border="1"> <thead> <tr> <th>No.</th> <th>Date</th> <th>Revision</th> </tr> </thead> <tbody> <tr><td> </td><td> </td><td> </td></tr> <tr><td> </td><td> </td><td> </td></tr> <tr><td> </td><td> </td><td> </td></tr> <tr><td> </td><td> </td><td> </td></tr> </tbody> </table>	No.	Date	Revision													 <p>www.gphcorp.com A Full Service A E Firm 10000 10000 10000</p>
	No.	Date			Revision															
<p>Sheet No. A003</p>	<p>KEY COLONY BEACH CITY HALL</p>																			

