







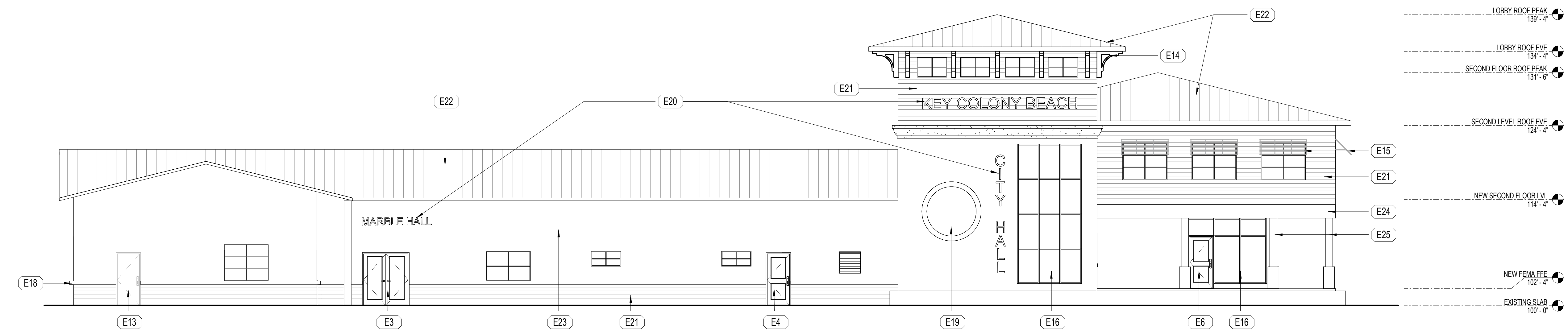


EXTERIOR ELEVATION NOTES

#	DESCRIPTION	E##
E1	POST OFFICE ENTRANCE 1	
E2	POST OFFICE ENTRANCE 2	
E3	MARBLE HALL ENTRANCE	
E4	SECONDARY ENTRANCE	
E5	MAIN ENTRANCE	
E6	FITNESS ROOM	
E7	POLICE STAIR	
E13	POST OFFICE SERVICE DOOR 2	
E14	CORBLE	
E15	FIXED LOUVER	
E16	STORE FRONT	
E17	CORNICE - HIGH	
E18	CORNICE - LOW	
E19	CITY SEAL	
E20	SIGNAGE	
E21	SHIPLAP STUCCO	
E22	STANDING SEAM MTL ROOF	
E23	STUCCO	
E24	BEAM	
E25	COLUMN & BASE	



1 FRONT ELEVATION  
1/8" = 1'-0"



4 SIDE (WEST) ELEVATION  
1/8" = 1'-0"

**cph**  
www.cphcorp.com  
**A Full Service A & E Firm**  
1992 SW 1ST STREET  
MIAMI, FLORIDA 33135  
Ph. (305) 274-4805

Plans Prepared By:  
**CPH Consulting, LLC.**

Project Jurisdiction  
Architect No. AA#####  
Engineer No. ###  
Landscape No. #####  
Surveyor No. ###

Professional Seal

**- NOT FOR CONSTRUCTION -**

NO.	DATE	REVISION

PROJECT STATUS

Designed:	Designer
Drawn:	Author
Checked:	Checker
Project No.:	2401034
Issue Date:	03/26/25
©	2025

SCHEMATIC DESIGN - EXTERIOR ELEVATIONS

KEY COLONY BEACH CITY HALL  
600 W. OCEAN DRIVE, KEY COLONY BEACH, FLORIDA 33051

THIS SHEET NOT VALID FOR CONSTRUCTION WITHOUT COMPLETE SET OF PLANS. SEE GENERAL NOTES FOR MASTER LEGEND

Sheet No.  
**SD3**



PROJECT STATUS

Designed:	Designer
Drawn:	Author
Checked:	Checker
Project No.:	2401034
Issue Date:	03/26/25
© 2025	

SCHEMATIC DESIGN - SECTIONS

KEY COLONY BEACH CITY HALL

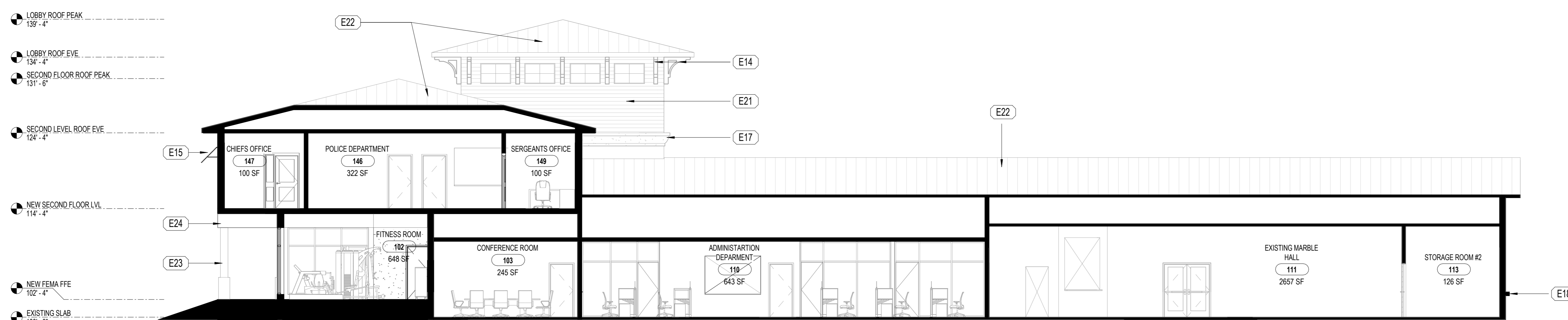
600 W. OCEAN DRIVE, KEY COLONY BEACH, FLORIDA 33051

THIS SHEET NOT VALID FOR  
CONSTRUCTION WITHOUT COMPLETE  
SET OF PLANS. SEE GENERAL NOTES  
FOR MASTER LEGEND

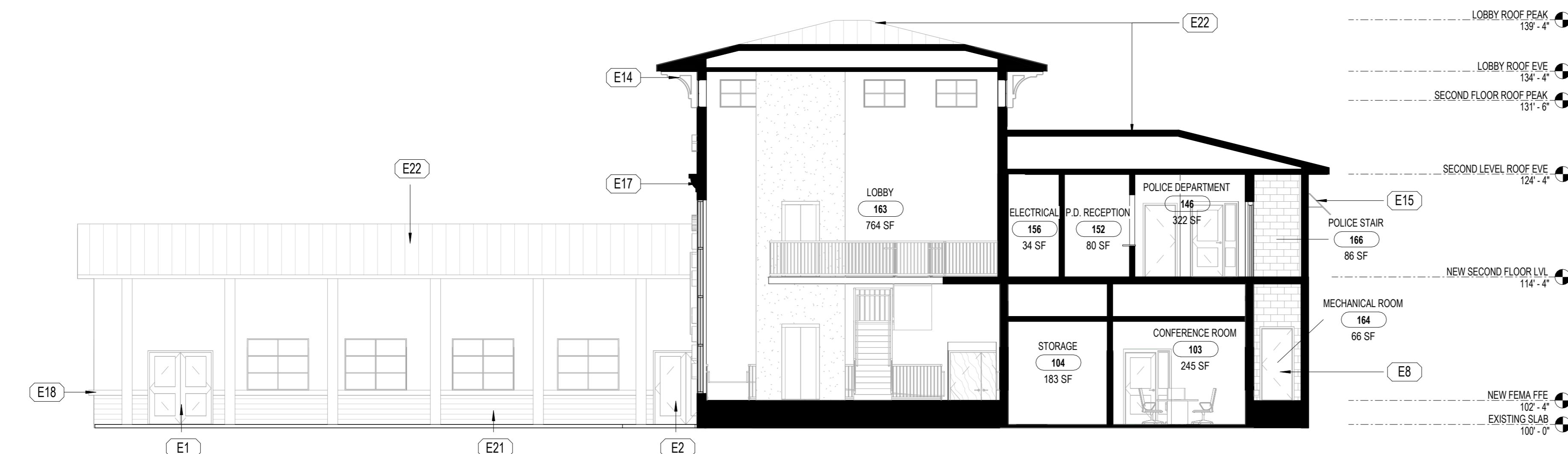
Sheet No.

**SD5**

#	DESCRIPTION	E##
E1	POST OFFICE ENTRANCE 1	
E2	POST OFFICE ENTRANCE 2	
E8	MECHANICAL ROOM	
E14	CORBLE	
E15	FIXED LOUVER	
E17	CORNICE - HIGH	
E18	CORNICE - LOW	
E21	SHIPLAP STUCCO	
E22	STANDING SEAM MTL ROOF	
E23	STUCCO	
E24	BEAM	



1 SECTION 1  
1/8" = 1'-0"



2 SECTION 2  
1/8" = 1'-0"

